



KENWOOD
COMMERCIAL

CROWN ROLLER MILL

OFFICE SPACE FOR LEASE

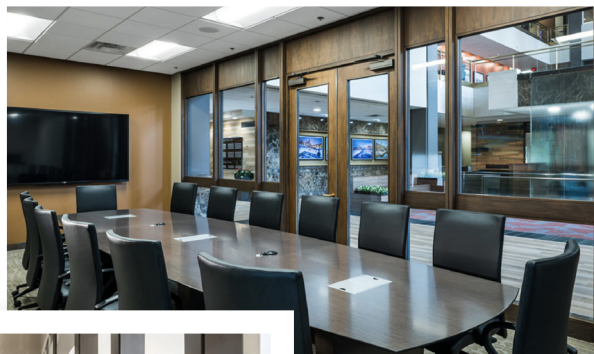
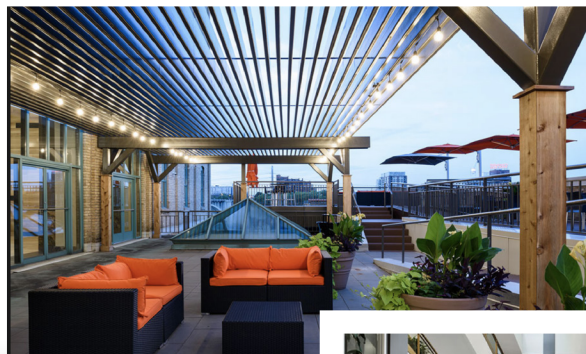
105 S. 5th Avenue, Minneapolis, MN 55401

DETAILS

AVAILABILITY	55,792 RSF on Floors 1, 2, 3, 4, 6 and 7 1,500 RSF to 27,583 RSF Contiguous Available September 1st, 2020
NET RENT RATES	\$14.00 - \$20.00 PSF
BUILDING SIZE	98,334 RSF
FLOORS	7
YEAR BUILT	1890
PARKING	On site and underground parking tenant contract. Surface and metered parking are available

AMENITIES

Newly renovated common areas
Expansive outdoor patio and BBQ area
Great views of the river
Located in the historic Whitney Mill Corridor
Close proximity to Minneapolis CBD
On-site property management



Local Knowledge

Allows us to uncover unique opportunities for our clients in Minneapolis | St. Paul.



Independent Advantage

We provide personalized service and take the time to fully invest in our clients.



Full-Service

From start to finish: we're directly involved every step of the way.

CONTACT US

Michael Doyle

612.242.8820

mdoyle@kenwoodcommercial.com

Nils Snyder

612.240.7967

nsnyder@kenwoodcommercial.com



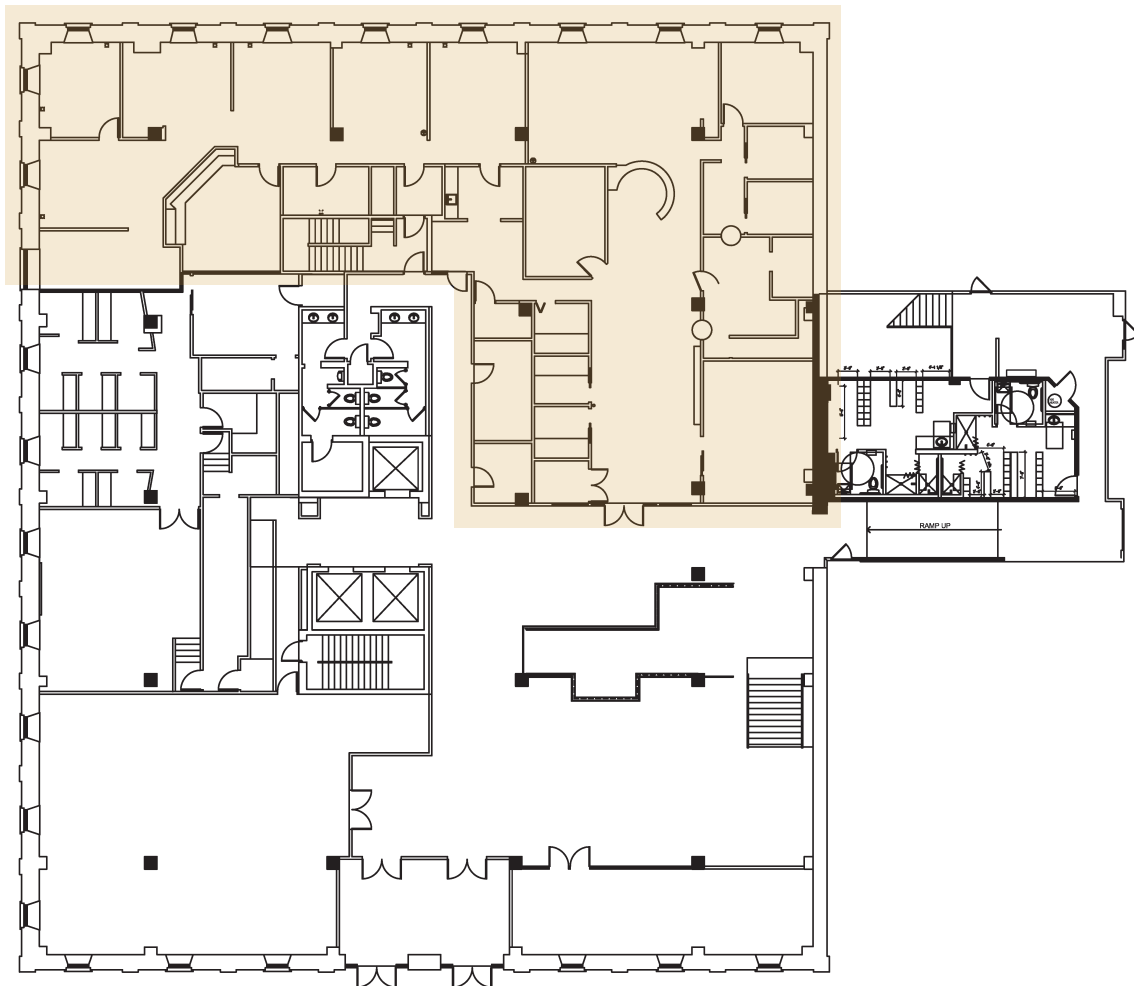
KENWOOD
COMMERCIAL

CROWN ROLLER MILL

105 S. 5th Avenue, Minneapolis, MN 55401

First Floor

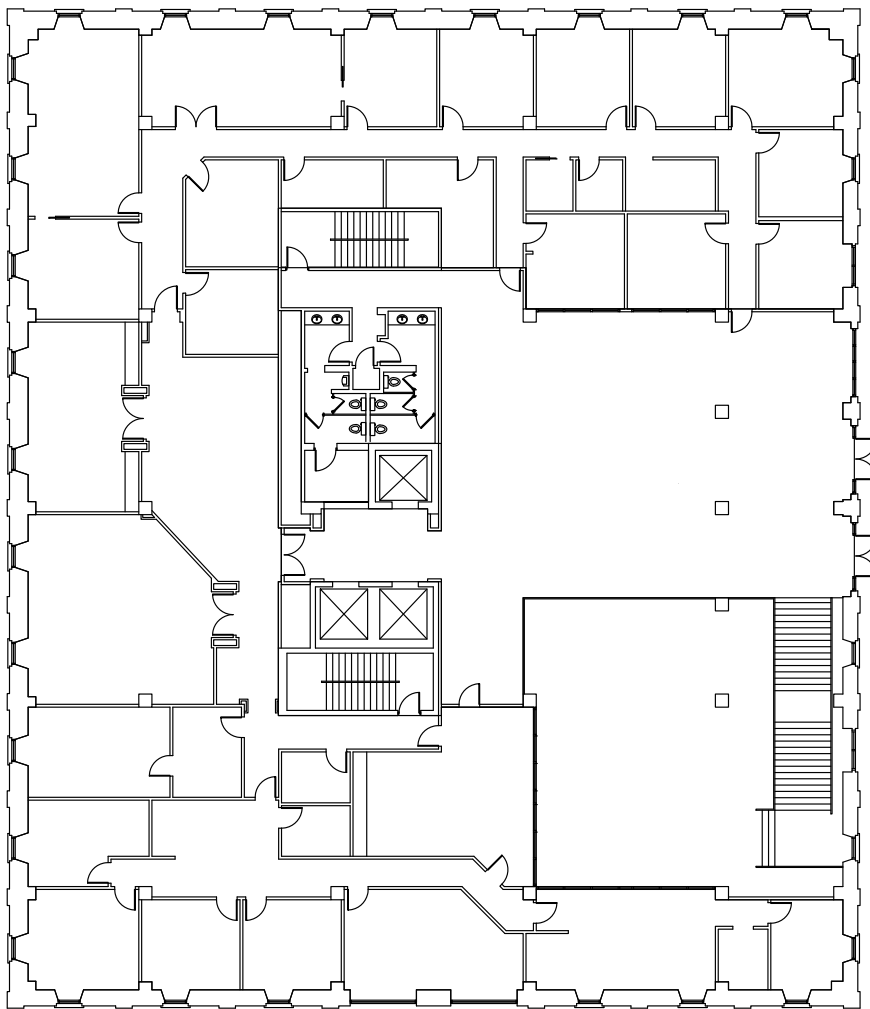
7,153 RSF



CROWN ROLLER MILL

105 S. 5th Avenue, Minneapolis, MN 55401

Second Floor 12,455 RSF





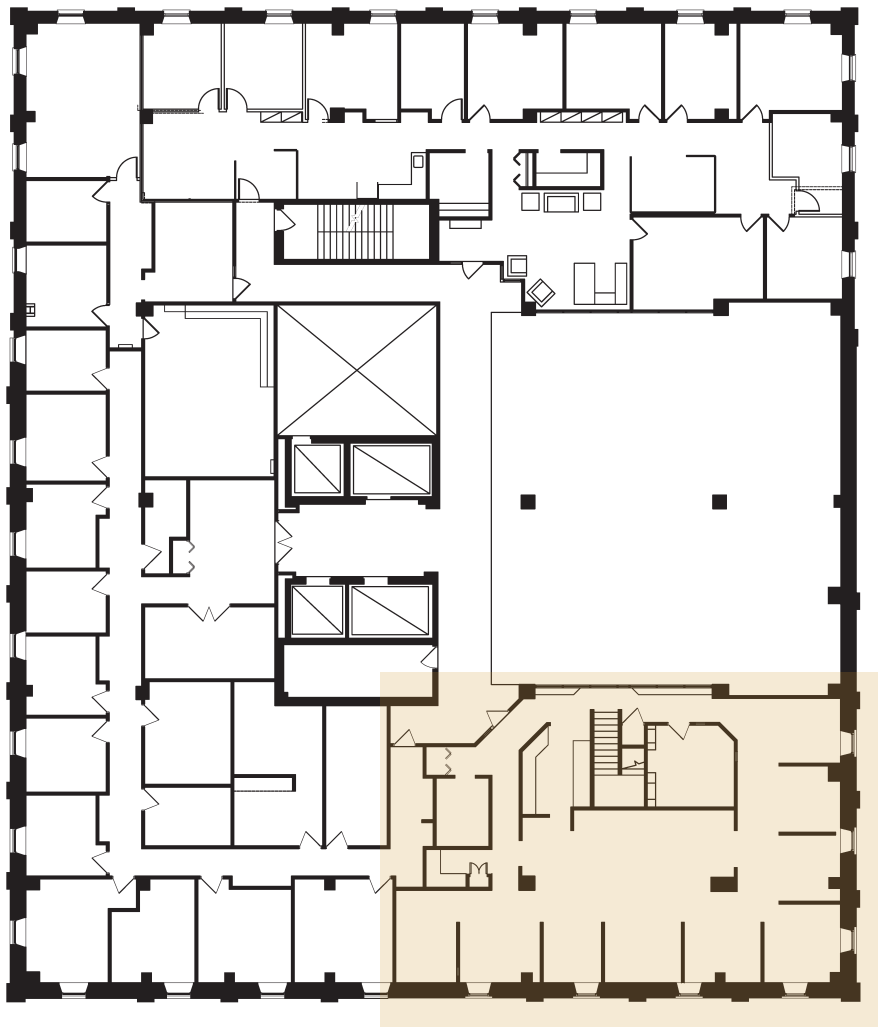
KENWOOD
COMMERCIAL

CROWN ROLLER MILL

105 S. 5th Avenue, Minneapolis, MN 55401

Third Floor

3,092 RSF





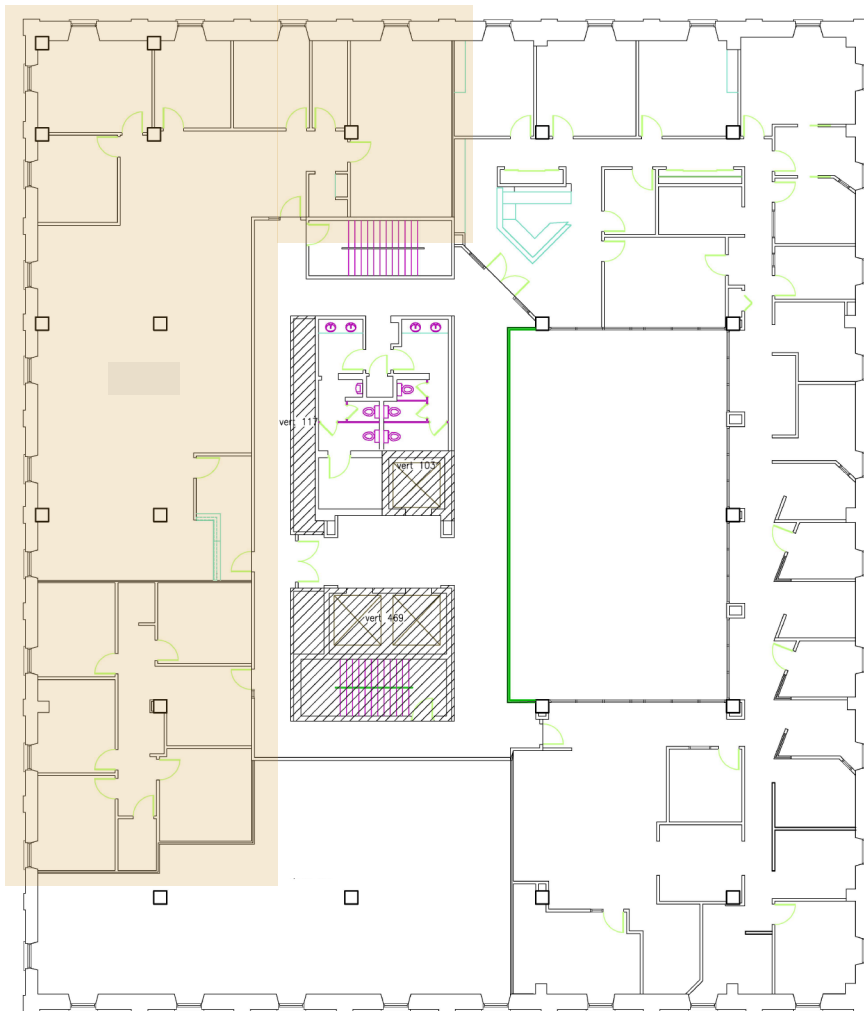
KENWOOD
COMMERCIAL

CROWN ROLLER MILL

105 S. 5th Avenue, Minneapolis, MN 55401

Fourth Floor

5,509 RSF



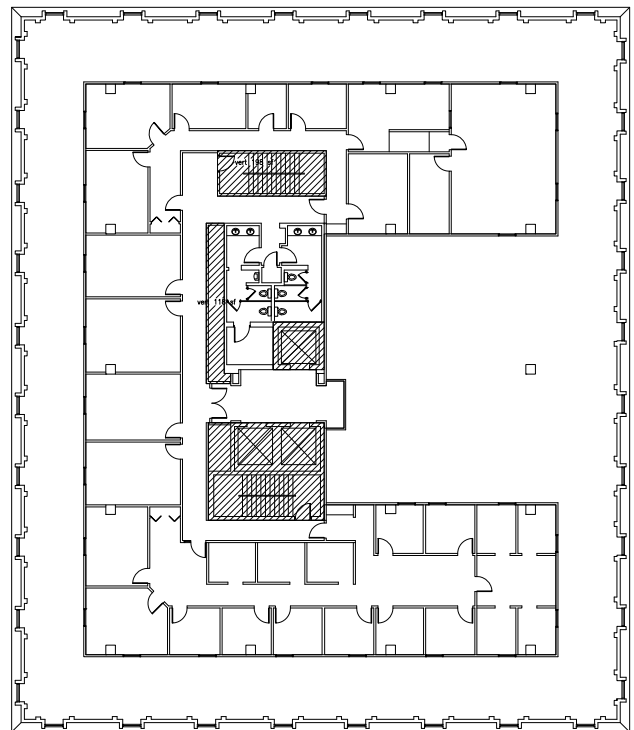
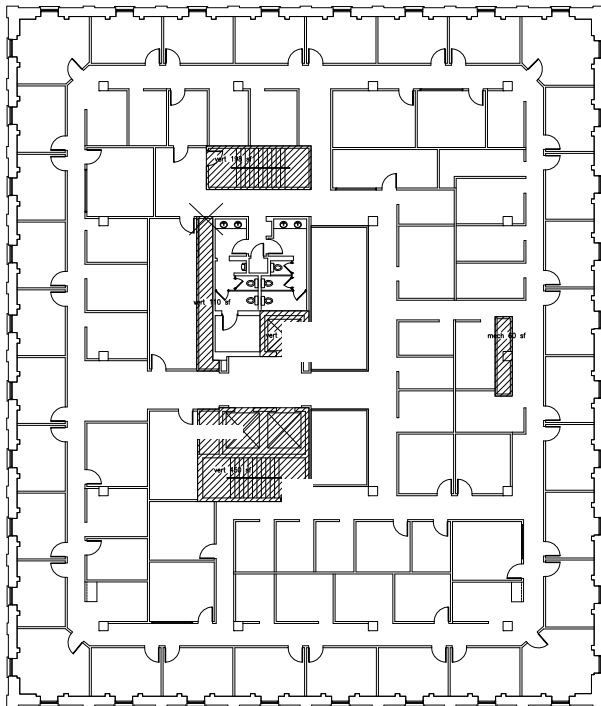


KENWOOD
COMMERCIAL

CROWN ROLLER MILL

105 S. 5th Avenue, Minneapolis, MN 55401

Sixth & Seventh Floor 27,583 RSF





105 S. 5th Avenue, Minneapolis, MN 55401

27,583 RSF

