



KENWOOD
COMMERCIAL



CROWN ROLLER MILL

OFFICE SPACE FOR LEASE Now Available - 6th and 7th floors!

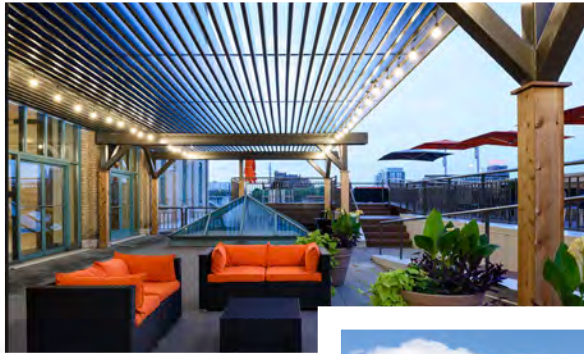
105 S. 5th Avenue, Minneapolis, MN 55401

DETAILS

AVAILABILITY	37,828 RSF on Floors 1, 3, 6 and 7 1,500 RSF to 27,583 RSF Contiguous
SPEC SUITE	NEW! 4,190 RSF Available on 1st Floor
NET RENT RATES	\$14.00 - \$20.00 PSF
2020 TAX/OPS	\$13.56 PSF
BUILDING SIZE	98,334 RSF
FLOORS	7
YEAR BUILT	1890

AMENITIES

Newly renovated common areas
Expansive outdoor patio and BBQ area
Great views of the river
Located in the historic Whitney Mill Corridor
Close proximity to Minneapolis CBD
On-site property management
On site and underground parking tenant contract. Surface and metered parking are available



Local Knowledge

Allows us to uncover unique opportunities for our clients in Minneapolis | St. Paul.



Independent Advantage

We provide personalized service and take the time to fully invest in our clients.



Full-Service

From start to finish: we're directly involved every step of the way.

CONTACT US

Michael Doyle

612.242.8820

mdoyle@kenwoodcommercial.com

Nils Snyder

612.240.7967

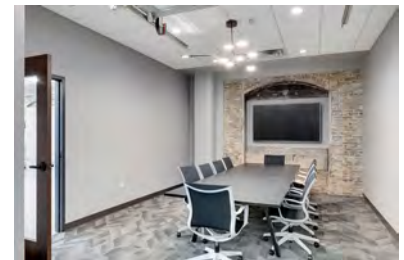
nsnyder@kenwoodcommercial.com



CROWN ROLLER MILL

105 S. 5th Avenue, Minneapolis, MN 55401

First Floor Spec Suite 4,190 RSF Available Now!





KENWOOD
COMMERCIAL

CROWN ROLLER MILL

105 S. 5th Avenue, Minneapolis, MN 55401

Third Floor

3,092 RSF



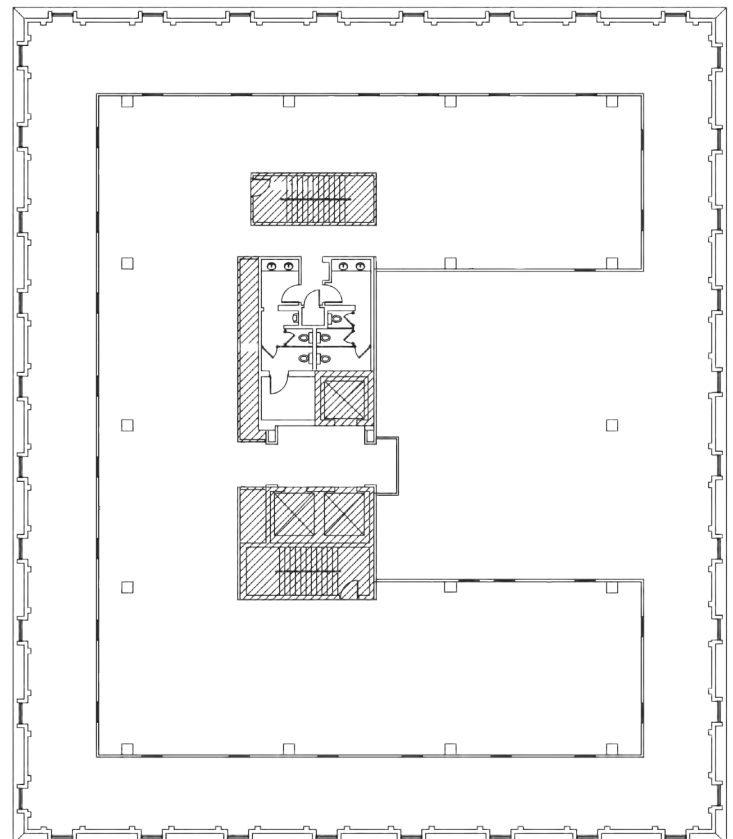
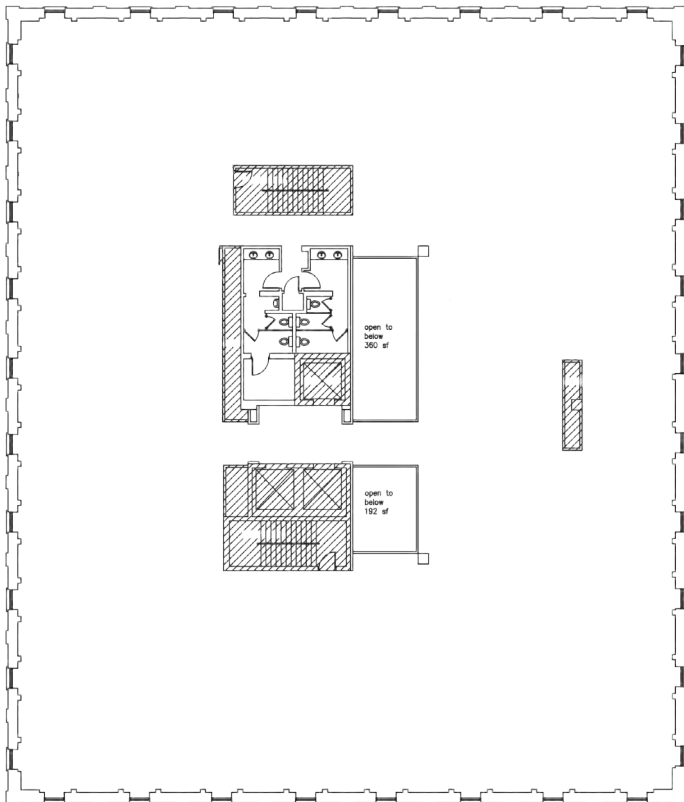
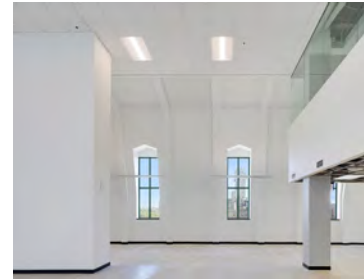
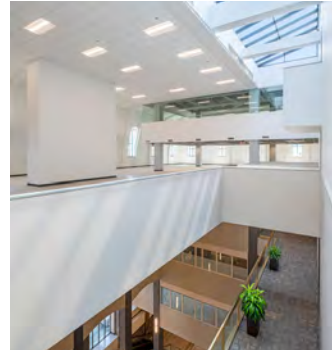


KENWOOD
COMMERCIAL

CROWN ROLLER MILL

105 S. 5th Avenue, Minneapolis, MN 55401

Sixth & Seventh Floor 27, 583 RSF Available Now!



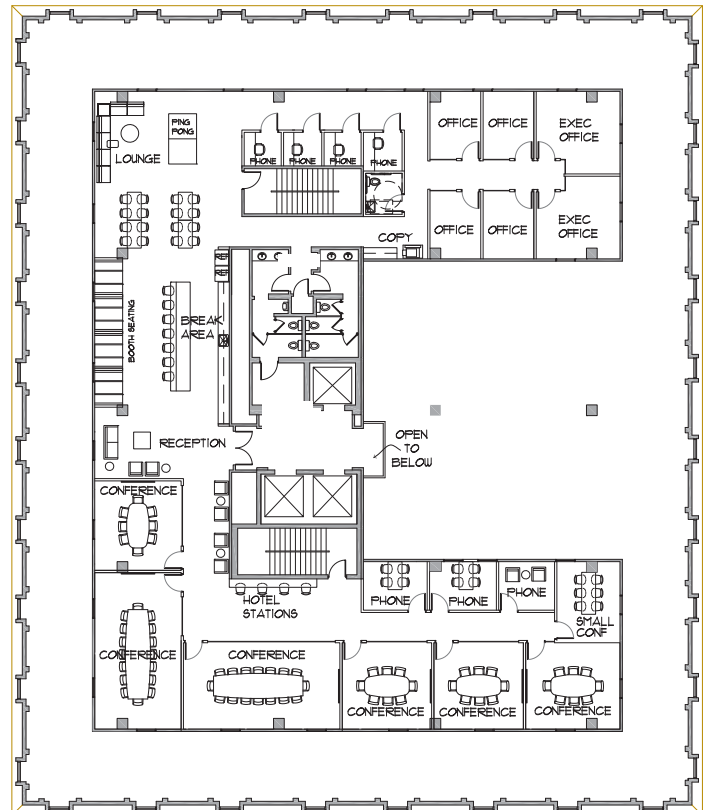
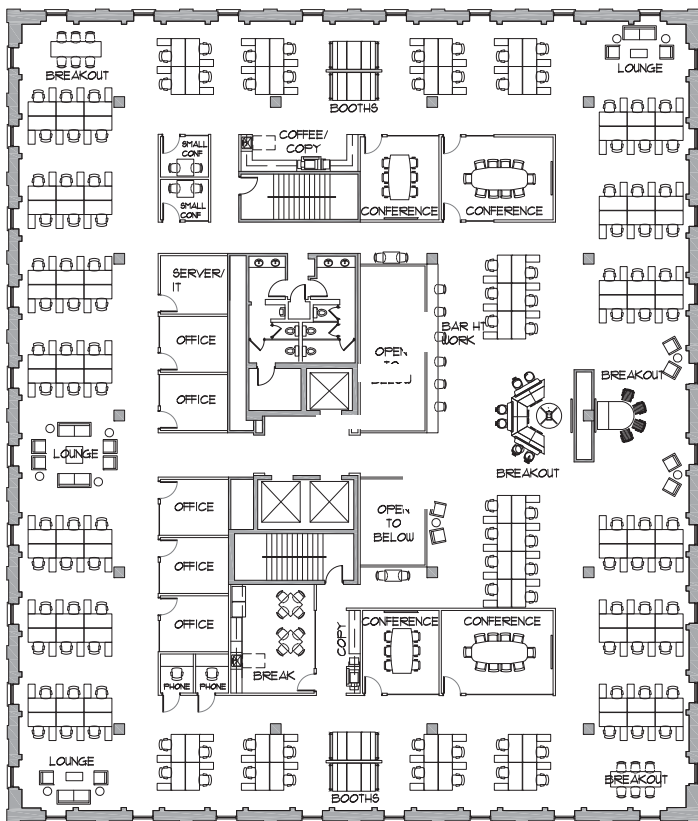


KENWOOD
COMMERCIAL

CROWN ROLLER MILL

105 S. 5th Avenue, Minneapolis, MN 55401

Sixth & Seventh Floor Concept Plans





KENWOOD
COMMERCIAL

RENDERINGS of Sixth and Seventh Floor Renovation

